

# **TRAILED SPRAYERS**

**AGS EN HP(X)** 2500–3000 liters; 15–24 m

*Quality protection for a high crop yield*



Our most advanced family of sprayers AGS 2500–3000 EN HP with a wide range of standard equipment and the AGS 2500–3000 EN HPX series with technical improvements respond to the requirements of modern agriculture, combined with our solutions developed in-house.



**Agromehanika**

SINCE 1968





## ***FAMILY OF TRAILED SPRAYERS AGS EN HP(X)***

Carefully structured, with an emphasis on design qualities and useful solutions, these sprayers enable you to work safely and efficiently. The circuit regulation system ensures the spraying is started immediately and provides for an even distribution across the entire surface. Thanks to the parallelogram hitch, the boom can be lifted even higher, while the Hydraulic drawbar ensures better wheel tracking. The HPX version also features a single-sided boom opening to help avoid any obstacles in the field.

**EASY OPERATION  
AND MAINTENANCE**

**EFFICIENCY**

**USER  
ADAPTABILITY**

**RELIABLE  
OPERATION**

**LONG  
SERVICE LIFE**

**ACCESSIBLE SPARE  
PARTS**





# SPRAYER'S EQUIPMENT

## CHASSIS

The chassis is the result of our extensive experience. It is robust and durable. Double layer of powder coating ensures the best anti-corrosion protection. The wheel track is continuously adjustable so it can be easily adjusted to different types of crops. All HP and HPX sprayers are equipped with mudguards.

## TANKS

Tanks are made from high-quality LDPE. They feature a compact design and excellent mechanical and chemical resistance properties. With its attractive design, the sprayer is made to impress. The main tank is available in 2500 and 3000 liter versions. It is designed to provide thorough mixing, minimise residual spray volume and simplify cleaning operations. The sprayers include two additional tanks for washing the circuit and hands.

## PUMPS

The main, piston membrane pump, is intended for spraying and available in Agromehanika BM150 (15 and 18 m booms) or Comet BP171 (21 and 24 m booms) versions. The auxiliary centrifugal pump Agromehanika C200 is provided for mixing the spray inside the main tank.

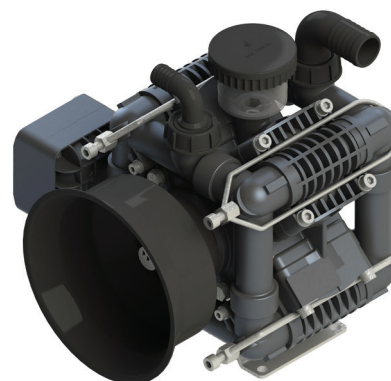
## PRESSURE REGULATOR

All AGS HP(X) versions are equipped with the AGtronik spraying computer to maximise spraying precision and comfort. The system regulates the entire circuit to ensure simultaneous beginning of spraying over the whole width of the boom.



### DID YOU KNOW?

The spraying computer AGtronik makes your work more comfortable and easy. Thanks to an accurate and uniform spray application, your crops are better protected even on challenging terrains.



Pump Agromehanika BM 150



Pump Agromehanika C 200



Spraying computer  
AG-TRONIK

# SPRAYER'S EQUIPMENT

## PARTIAL OR COMPLETE CLEANING

All sprayers are equipped with a system for complete and partial cleaning (pump, regulator, nozzles). Thorough cleaning after each use is vital for ensuring a long and reliable operation of the sprayer.

## SPRAYER OPERATION ZONE

It combines a well-arranged control panel, a step-on platform for accessing the lid of the main tank and a filling container for an easy and fast operation of the sprayer. The control panel combines all the systems (operation, cleaning, pumping, suction and filling) required to operate the sprayer's support functions.

## FILLING CONTAINER

Its advantages are especially revealed when using less soluble powdered spraying agents. It was designed for an efficient preparation and mixing of chemical products. Thanks to the Venturi effect, the spray is easily pumped into the main tank. It provides additional safety when handling chemical products. The filling container also includes a packaging rinser for cleaning the containers of plant protection products, which contains a tip that penetrates the protective film. A convenient mechanism is provided to lower the container to a comfortable height during use.

## ACTIVE MIXING

It prevents the sediment build-up of powder-based sprays at the bottom of the tank. Mixing is done by means of the injection nozzle and the independent centrifugal pump delivering a flow rate of 200 l/min.



Filling container



Mixing nozzle



Control panel



# SPRAYING

## EZY OR PLUS GPS NAVIGATION SYSTEM

Fully automated spraying. When combined with the AGtronik system, it allows for an automatic closing of individual spraying sections when driving across surfaces which have already been sprayed or outside the field. Compared to the classic marker, this system can also be used at night. Spraying with the GPS navigation system is also easier, more precise and faster. It enables saving the work history and operating parameters. It also features parallel guidance and allows for entering obstacles or positions of spraying interruption. The system can be connected to Google Earth.



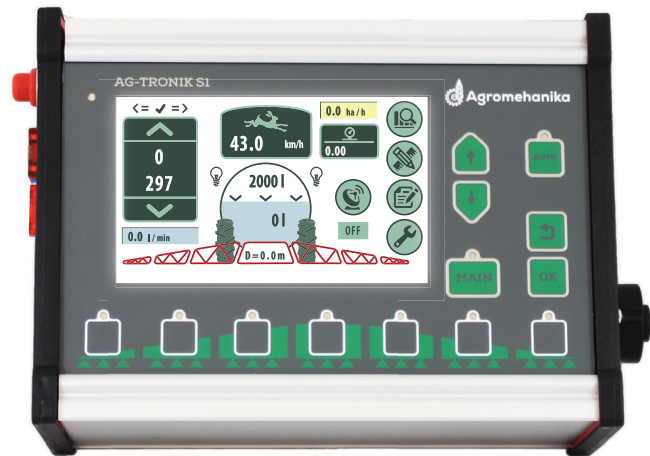
## ADVANCED TECHNOLOGY

When used together, the AGtronik and the GPS system offer the most advanced spraying technology available. While spraying operations are controlled by this technology, the driver can focus on operating the tractor.



## SIGNIFICANT SAVINGS

The AGtronik computer measures the spray volume per hectare by means of the flow sensor. Because the pressure is controlled by the computer according to the flow rate and the nozzle wear, you can save up to 20% of spray.



## SPRAYING COMPUTER AGtronik

It regulates the flow rate required for accurate spraying through the flow rate and speed sensors, based on the desired spray volume per hectare. If an individual spraying section is closed, the AGtronik will immediately adjust the amount of the plant protection product. The system is intuitive and easy to use. Additionally, AGtronik also enables you to analyse and save your work and to transfer data using a USB cable.

Just enter the desired spray volume and start spraying.



# SPRAYING BOOMS

## HYDRAULIC SPRAYING BOOMS HP AND HPX

Robust hydraulic booms HP with working widths of 15, 18, 21 or 24 m ensure accurate and efficient operation at high spraying speeds. The HPX boom series with working widths of 18 and 21 m also enables single-sided spraying. These booms feature stainless steel spraying pipes.

Hydraulic opening, lifting and levelling operations are controlled from a convenient control panel. They are equipped with a safety system which prevents them from closing when in working position and a mechanism for automatic locking in the transport position. The booms are mounted on a two-point hitch which enables terrain copying, even on sloping terrains. The hydraulic accumulator is provided for vertical shock absorption, while rubber dampers protect the sprayer from damages due to impacts coming from other directions. The boom arms are folded laterally, next to the tank, to ensure compact transport dimensions.

The parallelogram mechanisms allows the boom to be lifted up to a height of 230 cm to reach the higher-growing crops (corn, unflowers, tobacco).



### **TECHNICAL EXCELLENCE**

A hydraulic boom makes your work more comfortable, easier, faster and – most importantly – safer. Because it is controlled from the cab, the user is protected from aerosol particles of plant protection products.







**Agromehanika**

SINCE 1968

## OPTIONAL EQUIPMENT

### HYDRAULIC DRAWBAR

It reduces the required turning radius, ensures wheel tracking on lateral slopes and during turning and prevents excessive trampling of crops.

### WHEELS AND PNEUMATIC BRAKES

Larger 300/95 R46" wheels offer higher ground clearance. The dual-circuit pneumatic brakes ensure additional safety and higher road speeds.

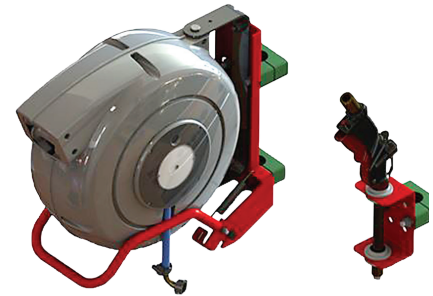
### EXTERNAL CLEANING KIT

We recommend cleaning the exterior of the machine after each spraying. The removal of aggressive chemicals helps to maintain optimal performance of the machine.

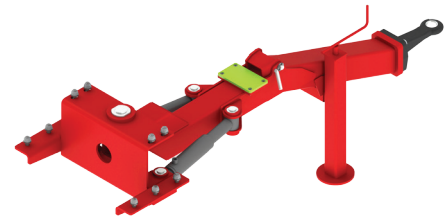


**NEW**

All HPX booms are equipped with an individual or simultaneous opening system, which saves a considerable amount of time.



Cleaning kit



Drawbar



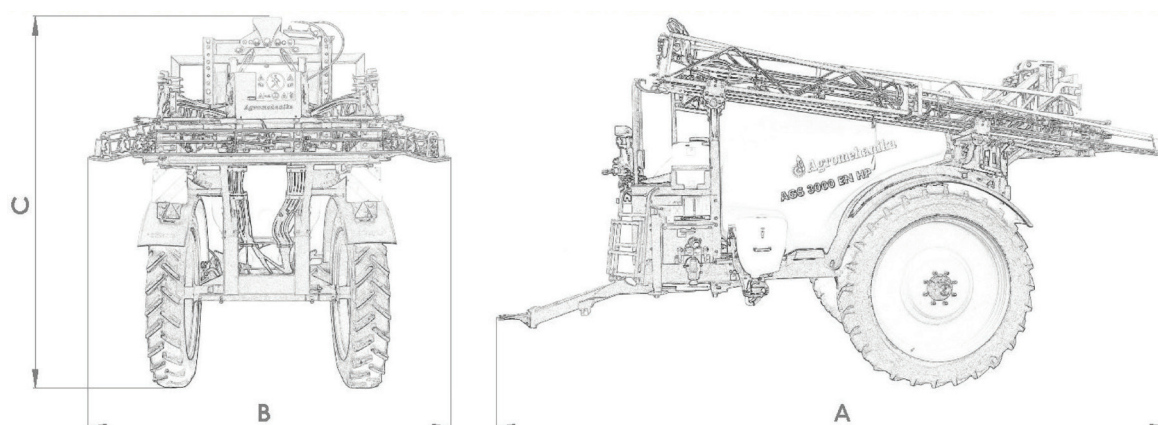


Agromehanika d.d., Hrastje 52A,  
 4001 Kranj, p.p. 111, Slovenia,  
 T: +386 4 23 71 300,  
 W: [www.agromehanika.si](http://www.agromehanika.si),  
 E: [sales@agromehanika.si](mailto:sales@agromehanika.si),  
[info@agromehanika.si](mailto:info@agromehanika.si)  
 8.2019



**Agromehanika**

SINCE 1968



SPREYER			AGS 2500 EN HP(X)				AGS 3000 EN HP(X)			
BOOMS			15m HP	18m HP(X)	21m HP(X)	24m HP	15m HP	18m HP(X)	21m HP(X)	24m HP
Dimensions (boom included)	Length A	(cm)	565	625	569	699	565	625	569	699
	Width B	(cm)	220	220	220	220	220	220	220	220
Hight C	(270/95 R44") (cm)		290				290			
	(300/95 R46") (cm)		300				300			
Adjustable track	(cm)	150 - 220				150 - 220				
Clearance (cm)	Wheel 270/95 R44"		70				70			
	Wheel 300/95 R46"		80				80			
Sprayer and boom weight (empty)	(kg)	2320	2350	2391	2412	2330	2360	2401	2422	
Sprayer and boom weight (full)	(kg)	5150	5180	5221	5240	5660	5690	5731	5752	
Number of sections		5		5		7		7		
TRI-JET nozzle holders	(pcs)	30	36	42	48	30	36	42	48	
Distribution of nozzles by sections		5-8-4-8-5		8-8-4-8-8		5-6-8-4-8-6-5		6-8-8-4-8-8-6		
Nozzle height	270/95 R44	45 - 235								
	300/95 R46	55 - 245								

Your dealer: